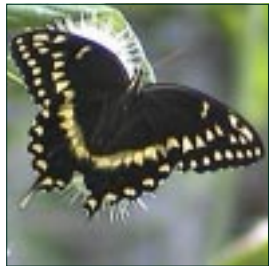


## Butterfly Identification

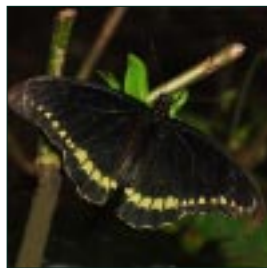
Female and male butterflies may have distinctly different markings. Look for small clues in appearance, noted below, and use “geographical cheating” by knowing which butterflies like to be around which plants using the guide at [www.corkscrewsanctuary.org/Wildlife/Insects/profiles/Butterfly\\_plants.pdf](http://www.corkscrewsanctuary.org/Wildlife/Insects/profiles/Butterfly_plants.pdf) .



Queen: no white spots on hindwing  
black border  
Soldier: white spots on hindwing  
black border  
Viceroy: visible veining; line through hindwing  
Monarch: visible veining; no line through hindwing



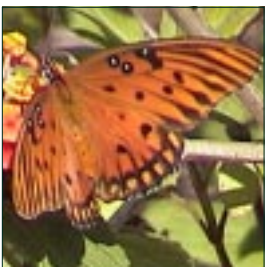
Black Swallowtail: royal blue on hindwing  
Palamedes Swallowtail: solid yellow band on hindwing  
Spicebush Swallowtail: azure on hindwing  
Giant Swallowtail: yellow bar also on forewing



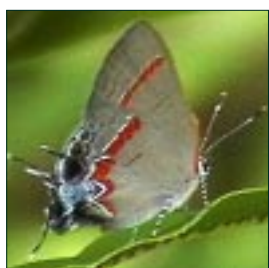
Zebra Swallowtail: black and WHITE striped  
Tiger Swallowtail: black and yellow striped  
Polydamus Swallowtail: no swallow tails  
Great Southern White: white on top with dark border



Cloudless Sulphur: bright yellow above  
Large Orange Sulphur: bright orange above  
Orange-barred Sulphur: pink patch above; pinkish under  
Orange Sulphur: black dots below; black edges above



Gulf Fritillary: black & white shiny dots on forewings  
Variegated Fritillary: no shiny dots; drab below  
Pearl Crescent: small; orange with black pattern  
Phaon Crescent: small; light patches on forewing tops



Gray Hairstreak: large orange marginal spot  
Red-banded Hairstreak: red band on both wings  
White Hairstreak: round red spot; white spots inward  
Fulvous Hairstreak: dark bands with no white; white spots inward

## Butterfly Identification

Identifying skippers can be uncommonly difficult for many species. Look for very tiny differences in color and thickness of wing borders, dark blotches or lack thereof, and body color. Males and females may have totally different appearances. Refer to Plates 26-42 in the field guide *Butterflies through Binoculars* for more photos and more thorough descriptions.



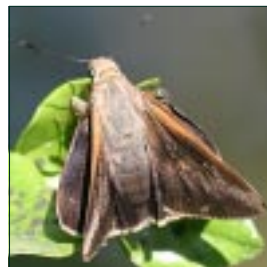
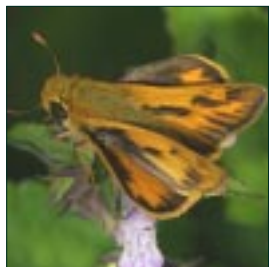
Zebra Longwing: black and pale yellow stripes  
Julia: longwing shape; solid orange; female w/black  
Ruddy Daggerwing: orange lines down wings; tailed  
Carolina Satyr: large eye spots, orange border



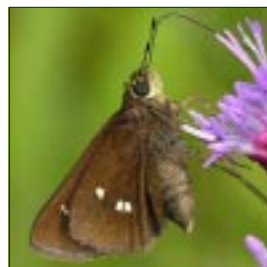
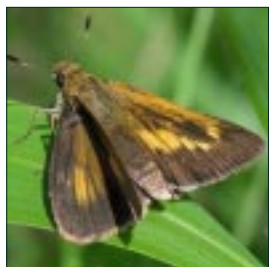
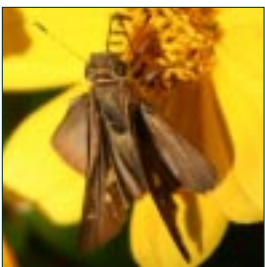
White Peacock: big white blotch on wing  
Common Buckeye: large eye spots, orange border  
Red Admiral: dark with orange bars, edges  
Morning Cloak: dark with wide light band at edges



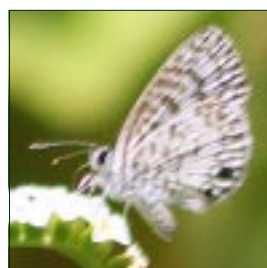
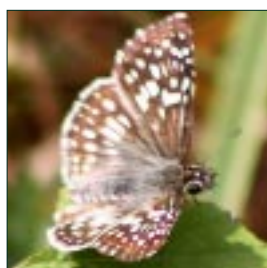
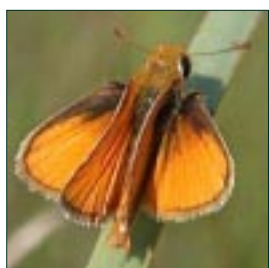
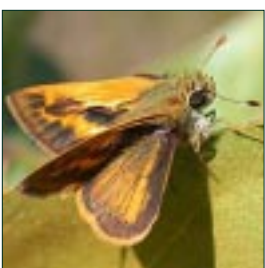
Brazilian Skipper: 3-4 translucent wing spots  
Silver-spotted Skipper: big white blotch on wing  
Long-tailed Skipper: blue on body, wing bases  
Dorantes Skipper: no blue on body, wing bases



Delaware Skipper: clear bright orange under  
Fiery Skipper: small dark spots on orange  
Least Skipper: tiny; weak flight; rounded wings  
Monk Skipper: dark red-orange below, chestnut above



Ocola Skipper: long narrow wings  
Palatka Skipper: very large; rusty brown color  
Palmetto Skipper: large; orange; golden head  
Twin-spot Skipper: winter only; dark brown; two (twin) spots together



Whirlabout: smudged dark spots  
Southern Skipperling: tiny; narrow white ray on hindwings  
Tropical Checker Skipper: white and tan pattern  
Cassius Blue: zebra striped; pale bluish background