



# THE BUZZARD BULLETIN

Notes & Information for CREW Trust Volunteers

April-May, 2026

Volume 10, Issue 4

## NOTEPAD

### Welcome

Welcome to new CREW Trust volunteer **Tim Denger**.

### Final program help

Volunteers are still needed for the following final programs of the season. Information, the types of help needed, and sign-up are posted inTiF.

#### Strolling Science Seminar

- April 11 - Nest checks - FPS
- April 18 - Spring Blooms - CMT

#### Guided Walks

- April 1 - CDT white trail
- April 15 - CMT green trail
- April 24 - CMT orange trail

### Orange hike

Hike the new orange trail with Robin on Friday, April 24, at CMT from 9-11 AM. This event is only for volunteers and members.

Reserve a spot in TiF.

### Hours add up

During the last two years, volunteers have contributed 11,198 hours including 6,305 hours of trail work and 3,917 hours guiding and sweeping weekly hikes and trail stewarding.

The hours total also includes volunteering at 226 non-trail work events such as speciality guided hikes, in-town lectures, outreach events, fund raisers, office help, and member-only events.

### TWT numbers

- In the last two years, the Trail Work Tuesday team completed
- 131 trail work days with
  - 49 benches installed
  - 7 picnic tables installed
  - 114 signs designed and installed;
  - 40 new signs planned for the coming year.

## Volunteers recognized

Thank you to the following for helping to make this season's CREW programs and projects so successful.

#### Guided walk leaders, sweeps:

Anthony Belcastro, Barbara Centola, Richard Kandik, Joe Killbride, Batya Levy, Christy Miller, Tom Myles, Mike Picciano, Jack Shine, Leonard Singer, Jan Watson

#### Specialty walk leaders, sweeps:

Elena Basoni, Dick Brewer, Barbara Centola, Joe Killbride, Terry McCay, Jack Shine, Jan Watson

#### Strolling Science Seminar sweeps:

Elena Basoni, Barbara Centola, Christy Miller, Tom Myles, Michael Picciano, Bill Rattner, Ryan Walsh, Jan Watson

**Trail Work Tuesday:** Paul Barnacke, Elena Basoni, Anthony Belcastro, Dave Craft, Bill Davis, Charlie Egli, Joe Killbride, Batya Levy, Tom Maish, Terry McCay, John Sansoucy, Leonard Singer, Rick Skrivan, Jack Yakish.

#### Office:

Sean Hunt, Bill Rattner  
**Education and Outreach:** Batya Levy, Leonard Singer

**Golf Tourney:** Paul Barnacke, Dick Brewer, Bill Davis, Charlie Egli, Larry Kruhm, Tom Maish, Tom Myles, Rick Skrivan, Don Stohler



*Top right:* Dave Craft, John Sansoucy, and Jack Yakish install a bench at CMT; *Center right:* Batya Levy and Leonard Singer at the Cape Coral Burrowing Owl Festival; *Bottom right:* Bill Davis, John Sansoucy, and Joe Killbride clear the new orange trail at CMT.

## Relaxed birds rouse to align, clean feathers

When a bird shakes all of its feathers at once, it's called rousing. Birds rouse (pronounced *raoz*) by raising their feathers away from their bodies and then shaking them out. This rearranges the feathers back into a normal position. It also shakes out dirt, dust, or excess water from the feathers.

It's often seen after preening, bathing, or during rest. Birds generally only rouse when they feel safe, secure and relaxed in their environment.

A similar term is *shuggle* which means to shake or rattle unsteadily.



# *A is for Adventitious, Aestivation, And Apoptosis*

**A**dventitious means occurring by chance, by accident, or appearing in an unusual place. In botany, it describes plant organs like roots, buds, or shoots that develop at an unusual location or an unexpected part of the plant.

**Adventitious roots** grow from any part of the plant other than the original root system. They typically sprout from stems or branches. They can be *prop roots* like a banyan tree where the roots grow down from stems or branches to the ground. Plants such as Virginia Creeper and ivies have *climbing roots* which are tiny adventitious roots along the vines to “glue” themselves to walls or trees. A third form of adventitious roots are from propagation. When a succulent leaf or willow cutting is put in water, roots start growing from the cut edge. Those are adventitious roots.

**Adventitious buds and shoots** appear in places where they are not expected. If a tree is pruned heavily, little sprouts may shoot out directly from the thick bark of the trunk. Some plants actually grow tiny baby plants along the edges of their leaves. Many plants like strawberries or crabgrass use adventitious runners to take over an area.

## Staying connected

### People

Bob Lucius  
831-236-5518  
rlucius@crewtrust.org

Piper Jones  
239-229-1088  
education@crewtrust.org

Robin Serne  
919-649-7158  
robin@crewtrust.org

Trish Schranck  
239-657-2253  
ee@crewtrust.org

### Web sites

www.crewtrust.org  
www.trackitforward.com  
(hours & events)

The Buzzard Bulletin contains notes and information for CREW volunteers and is emailed six times a year (September, November, January, March, May, July). Dick Brewer, editor.

**A**estivation is a period of animal dormancy that allows the animal to survive in harsh environmental conditions by reducing metabolic activity and conserving energy. It occurs in hot, dry, and drought-prone seasons and prevents dehydration and water loss. It functions in a similar manner to cold-season hibernation for warm-blooded animals

Aestivation is common in many cold-blooded animals. Alligators dig dens in banks and shut down, crayfish dig burrows and tunnel down to moisture, Apple Snails burrow into the soil and secrete a protective mucus around themselves to prevent desiccation, snakes may shelter under dead logs or in holes in the ground, and frogs bury themselves in mud.

Even some fish aestivate. Florida Gar aestivate by burrowing into marsh sediments. They can survive because they have a swim bladder that functions like an auxiliary lung. Examples and more information are at [www.dickbrewer.org/CREW/BB/19-Dec.pdf](http://www.dickbrewer.org/CREW/BB/19-Dec.pdf)

**A**poptosis is natural, programmed cell death in plants and is essential for the organism’s survival. It is an integral part of a plant’s development and defense and occurs at all stages of the life cycle, from fertilization to death of the whole plant. Without it, tall trees would probably not be possible and plants would more easily succumb to any invading microorganism.

There are two types of apoptosis in plants.

The first (fancy word: *autolytic*) occurs during normal plant development. Visible signs are when leaves, fronds, or lower branches are programmed to die and fall off as the plant grows. Dropping all leaves in winter and a petal wilting following pollination are also examples.

The second (fancy word: *non-autolytic*) occurs when the plant defends itself against stress or injury caused by pathogens (viruses, bacteria, fungi) or sucking insects. Cells surrounding the pathogen die to create a barrier protecting healthy cells. One visible sign of this type of apoptosis is the brown and yellowish circles on plant leaves that surround and isolate the infection or injury.



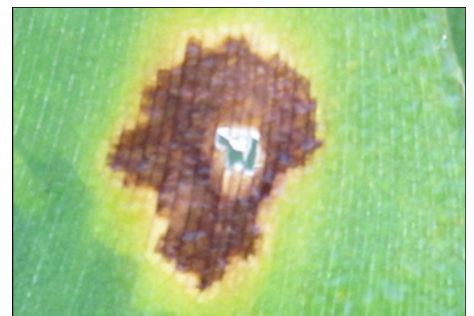
An Apple Snail burrows into the sand



Sand “chimneys” are signs a Crayfish has burrowed down to find moisture.



*Autolytic*: Needles, leaves, low branches die



*Non-autolytic*: Defense against injury