



# The Buzzard Bulletin

Notes & Information for CREW Trust Volunteers

October-November, 2018

Volume 3, Issue 1

## Notepad

### Welcome

Welcome to new CREW Trust volunteer Jessica Lord.

### Welcome

Welcome to Savannah DeBarr, CREW Trust's new Education Coordinator.

Savannah is an FGCU graduate and was a CREW Trust intern last summer.



## Seminars for and by volunteers

### CREW Review

January 12 (Sat.)

### Birding Basics

January 30 (Wed.), 8-11 AM outdoors with Barbara Centola

### Wildlife Photography

February 5 (Tue.), 6 PM CREW office with Bill Zaino and Andrew Mease

### Wildlife Photography

February 12 (Tue.), 8 AM Bird Rookery Swamp with Bill Zaino and Andrew Mease

## Reminder

The October wildflower walk and two November Strolling Science Seminars require advance registration. For information, go to [www.crewtrust.org](http://www.crewtrust.org) (programs).

## While you were away this summer

### Trail cameras captured action

Summer on CREW Trust trails means many paths are often wet and muddy, grasses and vegetation are high, and visitors are few.

But that doesn't mean there's a lack of activity.

CREW Trust volunteer Tom Mortenson has trail cameras set up in the Marsh Trails, Cypress Dome, and Caracara Prairie Preserve to discover who and what are using the trails.

"I want to encourage people to use them [photos] to explore life in the swamp," said Mortenson. "To me it's a vibrant, healthy, fully functioning ecosystem for the animals and birds that live there."

Wildlife recorded on the trails during August and September include Florida Black Bear (one with four cubs), Florida Panther, White-tailed Deer, Bobcat, Coyote, River Otter, Wild Hog, and Wild Turkey.

Smaller wildlife have been birds, Cottontail and Marsh Rabbits, Opossum, Raccoon, Armadillo, and in the Marsh Trails, Gopher Tortoise.

Hikers, hunters during season, vehicles, and other evidence of human activity have also been recorded. Ask Tom about the "skunk apes."



Two of Tom's Florida camera systems transmit images in real time where they are viewable on the internet.

Mortenson invites CREW Trust volunteers to watch the action and wildlife whenever they wish by using this URL, user name, and password:

[www.moultriemobile.com](http://www.moultriemobile.com)

email: [mortensontom@gmail.com](mailto:mortensontom@gmail.com)

password: CREWMarsh!

## Where to get it

Some equipment mentioned in the *On the Trails* columns is unique for the person using the equipment. Other items are good for everyone to carry.

Here are some ideas on prices and where to find some of the basic items.

**Lightning detector:** For use on the trails, check out one at the office from Anne instead of buying one. If buying one for personal use, prices start around \$25 at Amazon.



**Compass/whistle:** Buy a combined one rather than carrying two separate items. Some also come with a built-in thermometer.



Prices start at just over \$4. Try shopping Amazon or Walmart for the best price.

## Staying connected

### People

Brenda Brooks  
239-229-3948  
[brenda@crewtrust.org](mailto:brenda@crewtrust.org)

Savannah DeBarr  
239-229-1088  
[education@crewtrust.org](mailto:education@crewtrust.org)

Anne Reed  
419-206-8800  
[anne@crewtrust.org](mailto:anne@crewtrust.org)

### Web sites

[www.crewtrust.org](http://www.crewtrust.org)  
[www.trackitforward.com](http://www.trackitforward.com) (hours)  
[www.crewtrust.org/crew-trust-volunteers](http://www.crewtrust.org/crew-trust-volunteers) (volunteer library—the password is **crew17**)

Good app for smart phones  
weather bug (radar, lightning)

The Buzzard Bulletin contains notes and information for CREW volunteers and is emailed six times a year (September, November, January, March, May, July). Dick Brewer, editor.

## On the trails: What are you packing?

*In addition to water and a fully charged cell phone, CREW Trust volunteers share what they like to carry when on the trails.*

Since my life is pretty unscripted, I never know exactly what my day will include. Ergo, I keep everything needed to sustain life in my car!

I keep my cell phone charged in case of emergencies and have it with me on hikes, I tell Bruce where I'm going, and I keep a shovel for shoveling dead wildlife off roads so the scavengers don't get killed as well.

I keep beach towels for when I return from the hike and am dirty and sweaty, I keep a stash of plastic bags for picking up litter, and there's a first aid kit and a lightning detector.

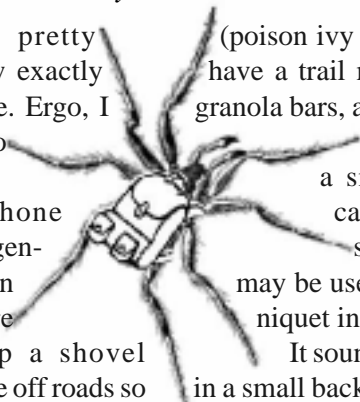
I always wear a hat, long sleeves, long pants with socks over the pant legs

(poison ivy and fire ants!) I always have a trail map, a compass, water, granola bars, and I never go anywhere without my binocs. It's a small thing, but I also carry a bandana to wipe sweat off my face, and it may be used as a bandage or tourniquet in an emergency.

It sounds like a lot but it all fits in a small backpack. I'm usually alone on my hikes, because except for my CREW buddies, I don't know many people who like hiking. Too scared!

When I'm giving guided hikes, I do carry a canvas tote with a couple reference books in case I get questions I can't answer.

... Janet Bunch



## Volunteer holiday creativity, gardening talents needed for success of two upcoming projects

### Project 1

#### Suzanne's Garden

Suzanne's Pavillion at the Marsh Trails is to many visitors a place to sit and rest.

To other people with slightly sentimental hearts, it's an incredibly sweet and romantic way to honor someone's memory.

The plaque at the pavillion has an small area around it for a garden. There have been plans off and on to start one, but it has never happened.

There are challenges such as the location's lack of access to water which may require planting toward the end of



rainy season so that the plants get a good start.

Volunteers who are able to assist with the beautification of the area are asked to contact Anne.

### Project 2

#### We Wish you a CREW-y Christmas

The CREW Trust has been invited by Naples Preserve to participate in their *Preserving the Holiday Spirit* event December 7-9.

This is a different-than-normal outreach event for CREW.

Needed are two to three creative volunteers who love holiday decorating and want to put together a holiday-themed display that has a degree of environmental or nature educational value for the three day event.

For more details and information, please contact Anne.