

Sagittaria and others with similar looking leaves

Sagittaria

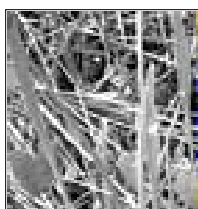
Sagittaria graminea (Grassy Arrowhead)

Grassy Arrowhead has small, grassy, leaves that are often submerged in shallow water. Flowers are on a stalk that extends above the water level and are typical sagittaria flowers: showy and white with 3 petals and a yellowish center, just smaller.



Sagittaria falcata (Arrowhead)

This Arrowhead has very narrow, elliptical lance-shaped leaves that are only about 1" wide. Flowers are on a stalk that extends above the leaves but are typical sagittaria flowers: showy and white with 3 petals and a yellowish center.



Sagittaria lancifolia (Broadleaf Arrowhead)

Broadleaf Arrowhead has large, firm, lance-shaped leaves about 4" wide and to 24" long. The leaf bases taper to the stem. Flowers are typical: showy and white with 3 petals and a yellow center and extend on thick stalks often a foot or more taller than the leaves.



Sagittaria latifolia (Common Arrowhead)

Common Arrowhead has wide shovel-shaped leaves that have nearly pointed basal lobes, unlike other sagittaria. Veins radiate out from the stalk in a circular pattern. Flowers are typical sagittaria: white with 3 petals although centers are more greenish than lancifolia. The lobes are much deeper and more pointy than Pickerel Weed and the leaves are wider in relation to length than the *Peltandra*.



Duck Potato is a common name used for all of the Sagittaria. The plants have a starchy tuber or main root that is somewhat potato-shaped, and they grow in water where one would expect to find ducks.

Others

Thalia geniculata (Alligator Flag / Fire Flag)

Alligator Flag has broad lance-shaped leaves on long stalks. Leaves have rounded bases and can be up to 10" wide and more than 30" long.



Several leaves grow together on stalks that are sheathed at the base. Leaves have a waxy coating. Multiple small purple flowers with 3 petals hang from paired bracts on tall stalks.

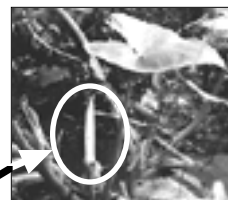
Orontium aquaticum (Golden Club)

Golden Club is a member of the Arum family. Leaves are oblong-elliptic, dark green with a velvety water-repellant surface. They are 2-4" wide and 6-12" long. Flowers are tiny and grow at the tip of a club-shaped structure that arises separately from the leaves.



Peltandra virginica (Arrow Arum)

Arrow Arum has arrowhead-shaped leaves, 10-12" long and 5-6" wide, and clustered on long succulent stalks up to 3' long which spread out from one base rather than growing individually. Flowers are small and cream-colored in a little spike that is wrapped in a green bract (spathe). Leaves are slightly cupped and are smaller and narrower in relation to width than *S. latifolia*.



Pontederia cordata (Pickerel Weed)

Pickerelweed grows to 2-3' tall. Leaves are up to 5" wide and around 10" long. Leaf shape is variable, but it is frequently arrow-shaped. It is shiny, dark green, and has lighter streaks as though an artist added a bit. Flowers are a spike of violet-blue, sometimes (rarely) white. Lobes are shallower and more rounded than *S. latifolia* or *Peltandra*.

